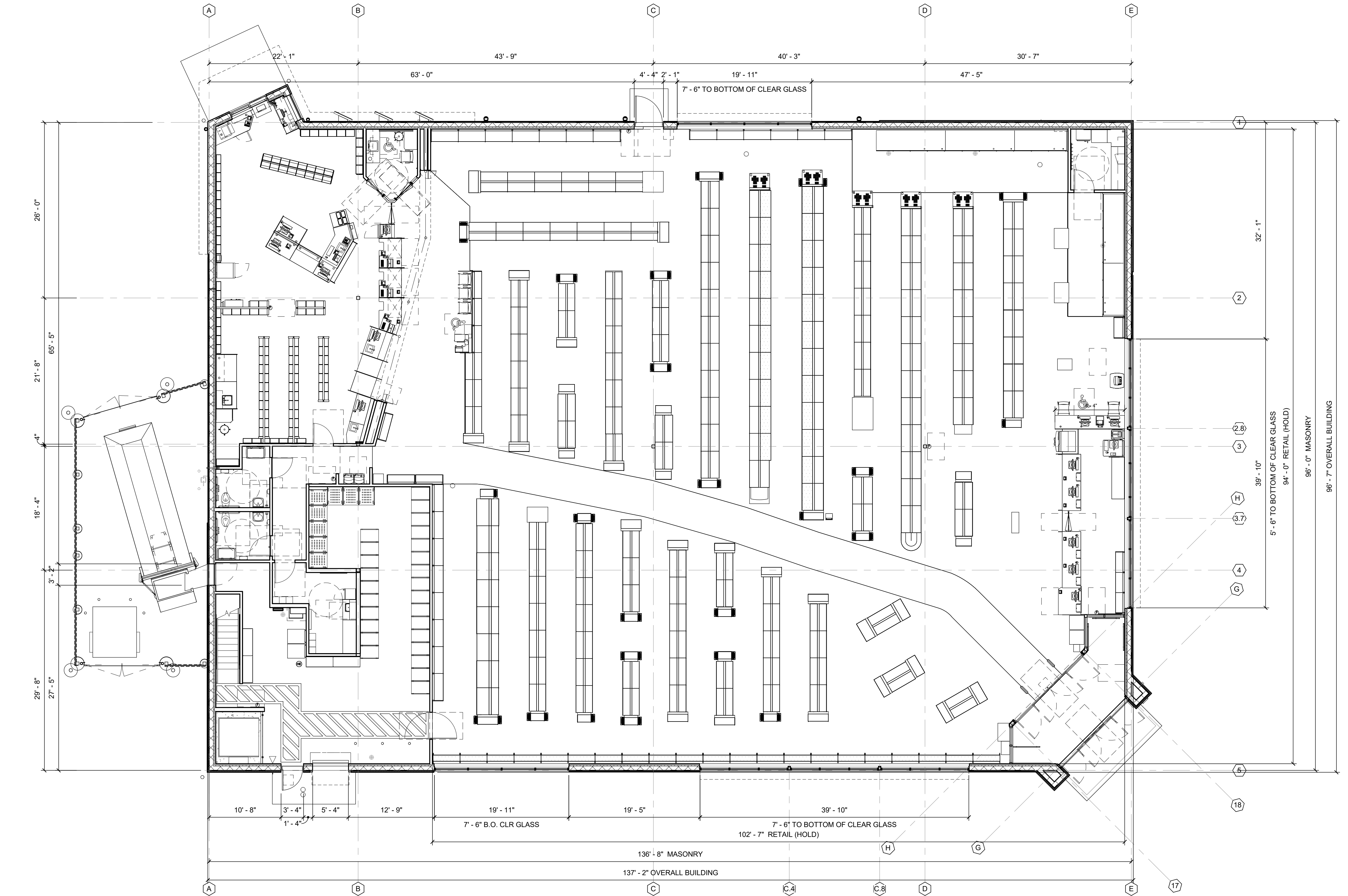


1 MEZZANINE MERCHANDISE PLAN
1/8" = 1'-0"



2 MERCHANDISE PLAN
1/8" = 1'-0"

MICHELS & WALDRON ASSOCIATES, LLC
 ARCHITECTS • PLANNERS
 645 WESTWOOD AVE. RIVER VALE, NJ 07075
 TEL: 908.261.1000 FAX: 908.261.1001
 E-MAIL: ARCHITECTS@MICHELSWALDRON.COM

OWNER
1204 PARK AVENUE ASSOCIATES LLC
 2 BROAD STREET, SUITE 400
 BLOOMFIELD, NEW JERSEY 07003

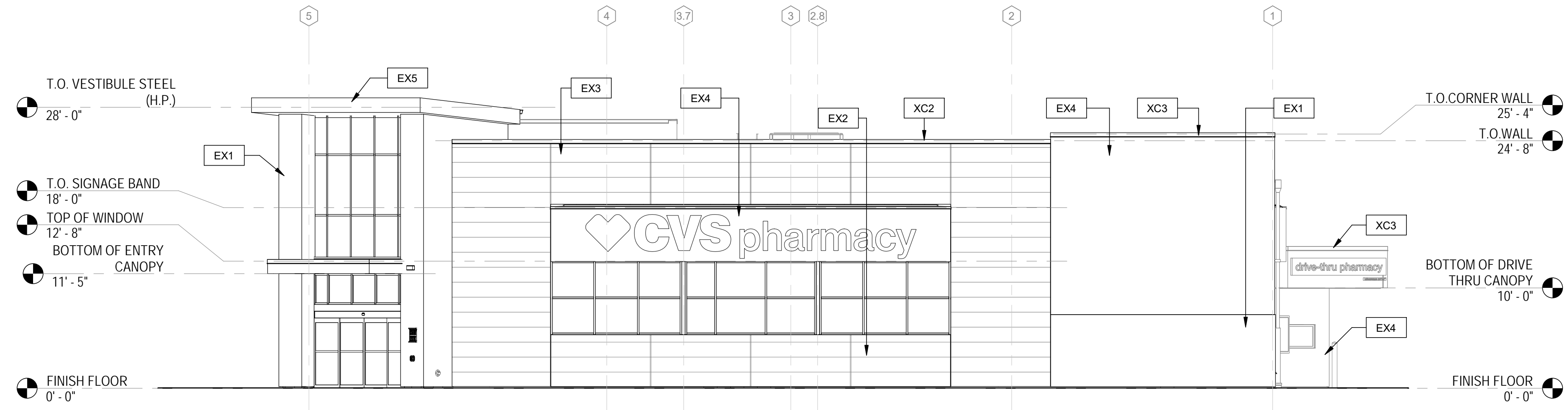
03-06-20 PLANNING BOARD ISSUE
 DATE: 02-13-20
 SCALE: DRAWN: CHECKED:

REVISIONS
 JOB NUMBER

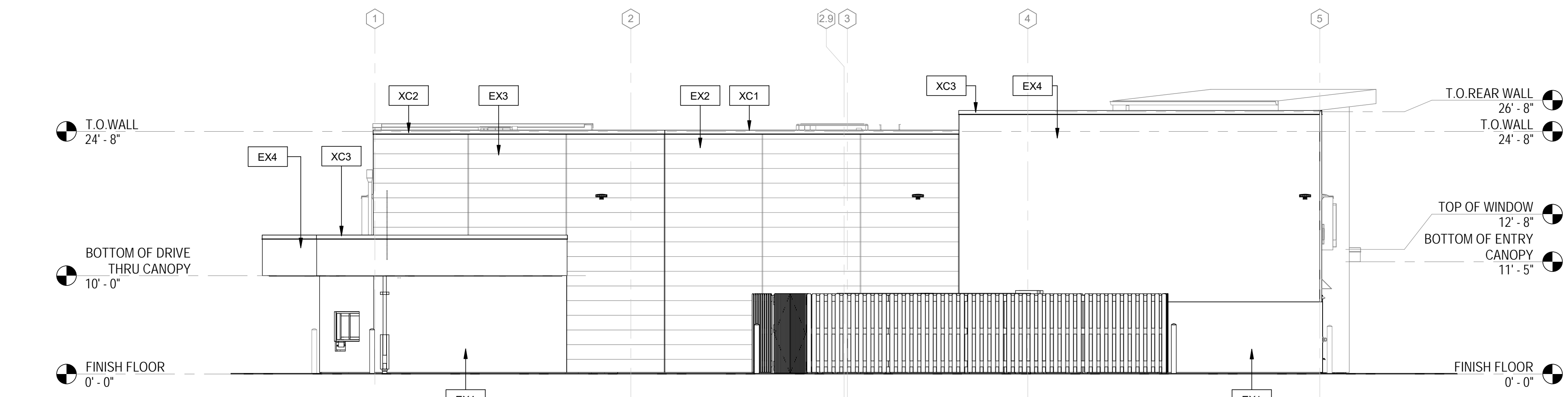
TITLE: **FLOOR PLANS**
PROPOSED CVS PHARMACY
 BLOCK 728, LOT 1,
 PARK AVE & RANDOLPH ROAD,
 CITY OF PLAINFIELD, NEW JERSEY

DWG. NUMBER
A-1

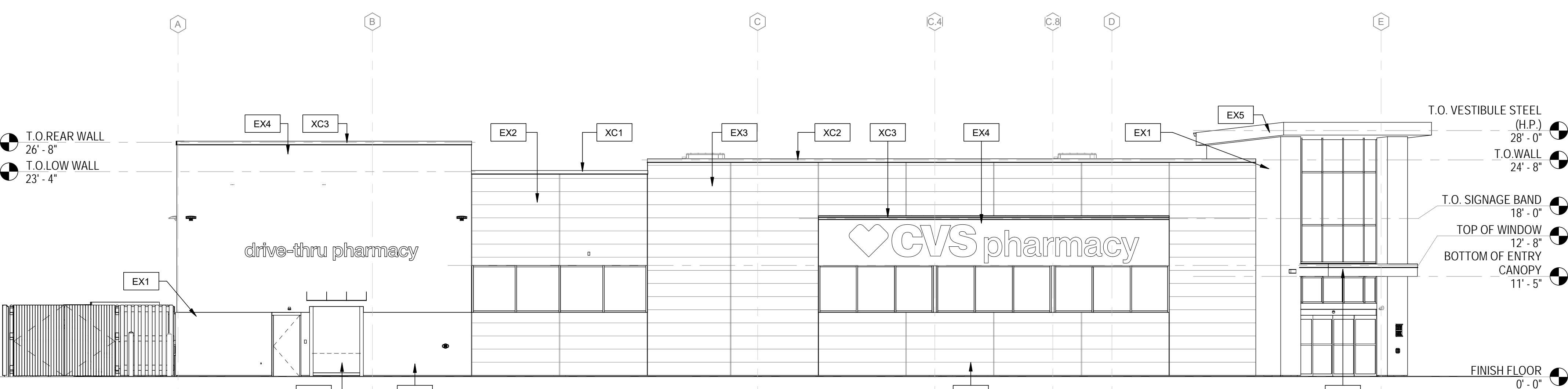
EXTERIOR MATERIAL SCHEDULE		
Material: Mark	Material: Manufacturer	Material: Description
EX1	NICHIHA	STACKED STONE KURASTONE, COLOR: DESERT, FINISH: TEXTURED, SIZE: 6" H X 25-58" L
EX2	NICHIHA / BENJAMIN MOORE	ILLUMINATION SERIES, SHOP PAINTED: BENJAMIN MOORE NORTH CREEK BROWN 1001, FINISH: SMOOTH, SIZE: 18" H X 10" L CUT EDGES PAINTED IN FIELD TO MATCH
EX3	NICHIHA	VINTAGE WOOD, COLOR: CEDAR, SIZE: 18" H X 10" L, CUT EDGES PAINTED IN FIELD TO MATCH
EX4	STO	STO LOTUSAN SYSTEM, 191 STOLIT, LOUTUSAN 1.5, COLOR, 9433 80 STO WHITE
EX5	RE SPECIFICATIONS	ALUMINUM WITH CLEAR ANODIZED COATING
EX9	RE SPEC	PLASTIC TO MATCH OSHA YELLOW
XC1	PAC-CLAD	PREFINISHED ALUMINUM COPING COLOR: DARK BRONZE
XC2	PAC-CLAD	PREFINISHED ALUMINUM COPING COLOR: SIERRA TAN
XC3	PAC-CLAD	PREFINISHED ALUMINUM COPING COLOR: BONE WHITE
XP1	BENJAMIN MOORE	PAINT, BM 1001 (4B) NORTH CREEK BROWN, FINISH: SATIN
XP2	PPG	PAINT, PPG CARAVEL BROWN 420-06 FINISH: SATIN
XP3	BENJAMIN MOORE	PAINT, BM AC-40 GLACIER WHITE, FINISH: SATIN
XP4	SHERWIN WILLIAMS	PAINT, SW 7731 SAN ANTONIO SAGE, FINISH: SATIN
XP12	BENJAMIN MOORE	PAINT, HC-190 BLACK, FINISH: SATIN



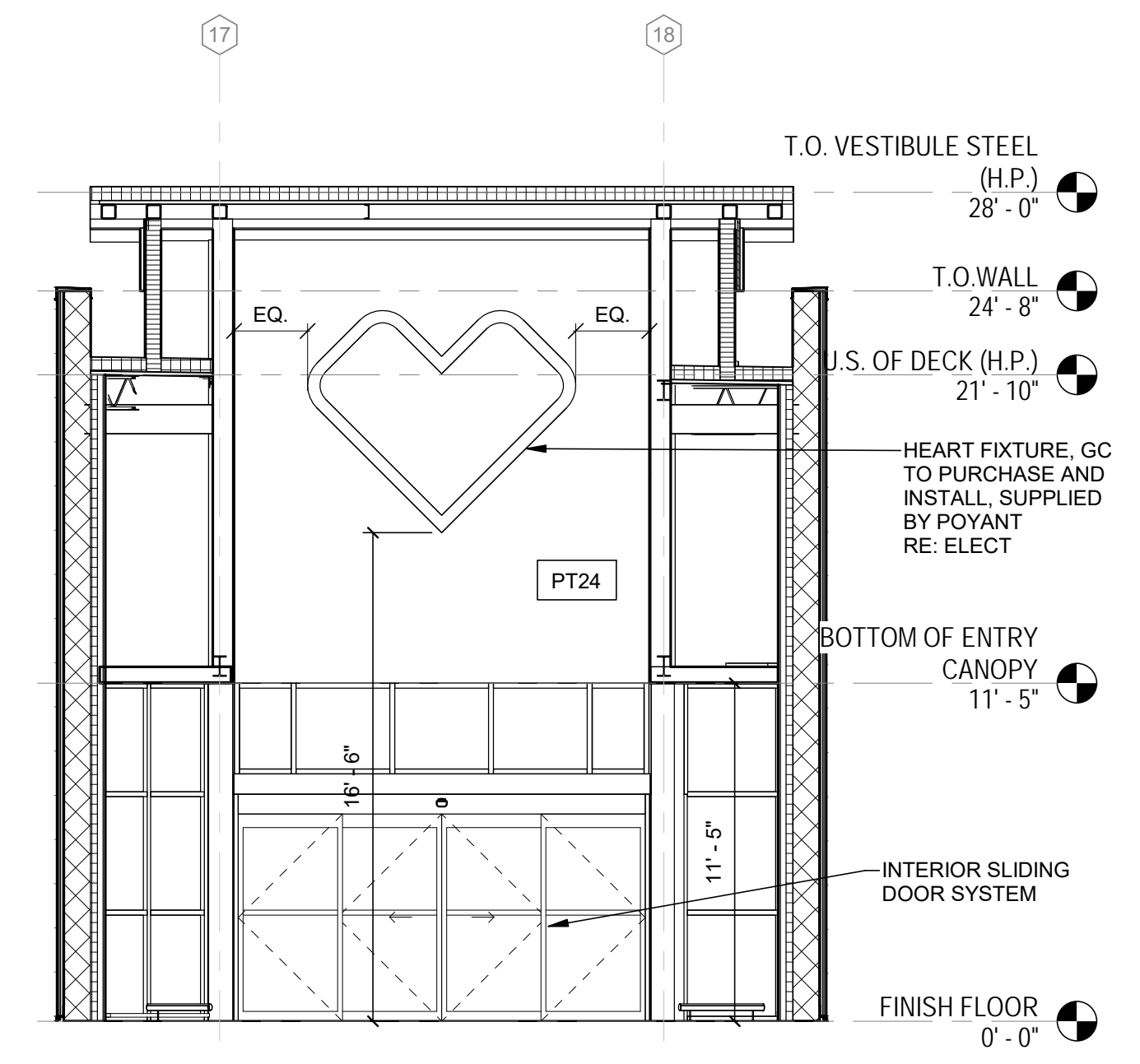
4 FRONT SIDE ELEVATION
A-2 1/8" = 1'-0"



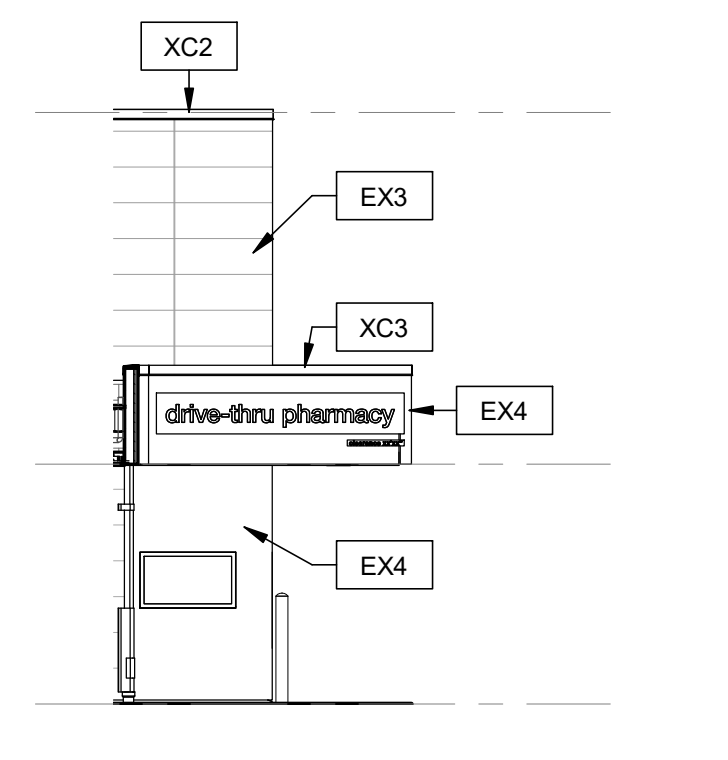
3 REAR SIDE ELEVATION
A-2 1/8" = 1'-0"



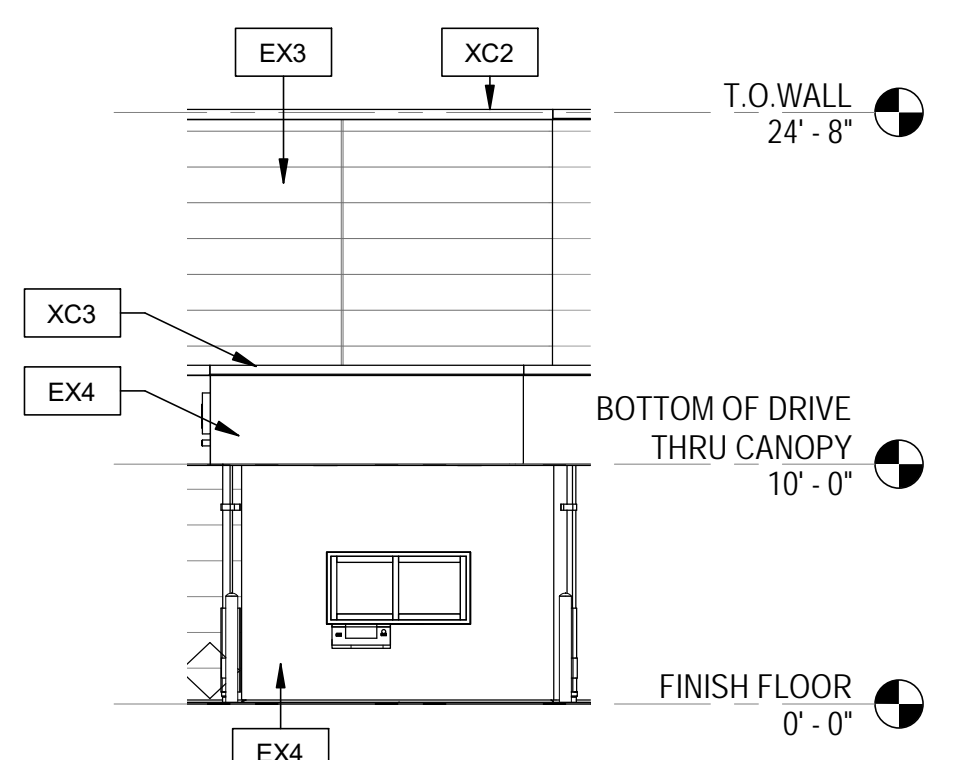
2 SIDE ELEVATION
A-2 1/8" = 1'-0"



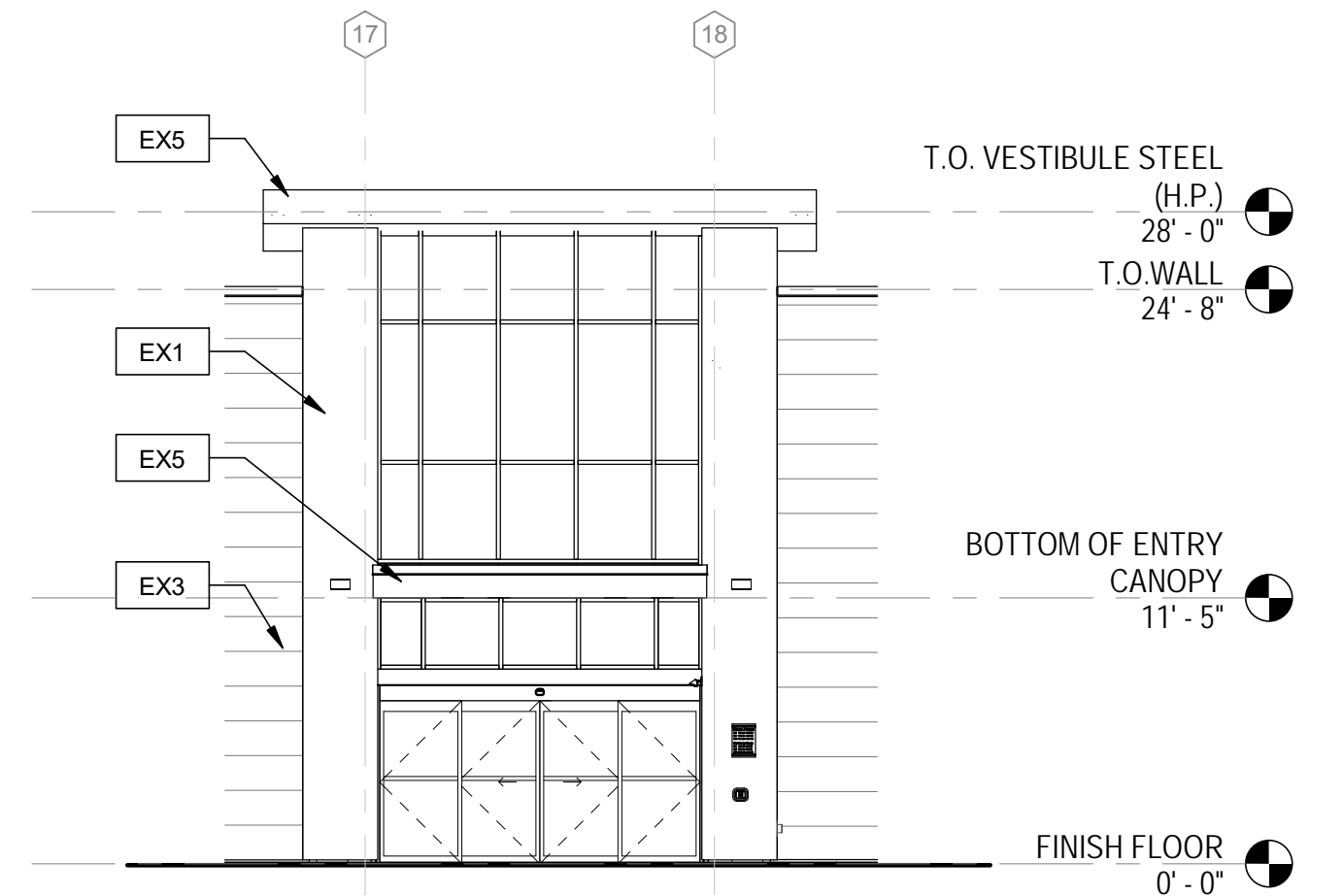
7 ENTRY SECTION - HEART signage
A-2 3/16" = 1'-0"



5 DRIVE-THRU PRE-SERVICE WINDOW
A-2 1/8" = 1'-0"



6 DRIVE-THRU ELEVATION
A-2 1/8" = 1'-0"



1 FRONT ENTRY ELEVATION
A-2 1/8" = 1'-0"

© Copyright 2019 by MICHELS & WALDRON ASSOCIATES, LLC. All rights reserved.

MICHELS & WALDRON
 ASSOCIATES, PLLC
 ARCHITECTS • PLANNERS
 645 WESTWOOD AVE. RIVER VALE, NJ 07075
 TEL: 201-664-6664 FAX: 201-664-6692
 E-MAIL: ARCHITECT@MICHELSWALDRON.COM

NY 13177
 NJ 07079
 NJ 07040
 NJ 07048
 NJ 07048
 NJ 07048

OWNER
1204 PARK AVENUE ASSOCIATES LLC
 2 BROAD STREET, SUITE 400
 BLOOMFIELD, NEW JERSEY 07003

03-06-20 PLANNING BOARD ISSUE
 DATE 02-13-20
 SCALE
 DRAWN
 CHECKED

REVISIONS
 JOB NUMBER

TITLE: **ELEVATIONS**
PROPOSED CVS PHARMACY
 BLOCK 729, LOT 1,
 PARK AVE & RANDOLPH ROAD,
 CITY OF PLAINFIELD, NEW JERSEY
 DWG. NUMBER

A-2